

Appendix 2: GIS Data Collection & Spatial Analysis Methodology

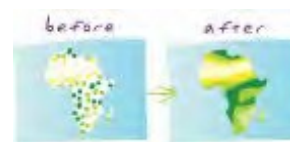
Geographic Information Systems (GIS) Data Collection

An extensive component of the regional analysis of health disparities included the collection and creation of various geographic data. Both demographic and physical environment data types were collected and/or created as part of the process. A list of data created or collected and the method for establishment is provided below. The list is provided by data contained within each map in the document, in numerical order.

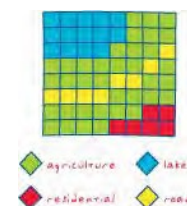
The majority of data created has been established using the following processes (definitions are provided below for terms shown in bold print). Demographic data sourced from 2010 US Census blocks, such as population density, median income, and educational attainment, has been **Interpolated (1)** to **Raster Data (2)** utilizing the **Inverse Distance Weighted (3)** method. Point, linear, and polygon data such as grocery stores, sidewalks, and parks/recreation facilities has been manually digitized and/or automatically created using **Geocoding (4)** based on online research and fieldwork. Proximity analysis has been conducted through the **Euclidean Distance (5)** function. Composite layers such as Socioeconomic Status (SES), Population Vulnerable to Chronic Disease, Elderly Transit Access, and the Health & Wellness Priority Areas has been created through a **Weighted Sum (6)** and/or **Combine (7)** function of **Reclassified (8)** raster data.

GIS Analysis Definitions

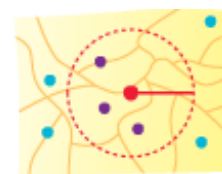
1. **Interpolation (source – ESRI):** The estimation of surface values at unsampled points based on known surface values of surrounding points. Interpolation can be used to estimate elevation, rainfall, temperature, chemical dispersion, or other spatially-based phenomena. Interpolation is commonly a raster operation, but it can also be done in a vector environment using a surface model.




2. **Raster Data (source – ESRI):** A spatial data model that defines space as an array of equally sized cells arranged in rows and columns, and composed of single or multiple bands. Each cell contains an attribute value and location coordinates. Unlike a vector structure, which stores coordinates explicitly, raster coordinates are contained in the ordering of the matrix. Groups of cells that share the same value represent the same type of geographic feature.



3. **Inverse Distance Weighting (source – ESRI):** An interpolation technique that estimates cell values in a raster from a set of sample points that have been weighted so that the farther a sampled point is from the cell being evaluated, the less weight it has in the calculation of the cell's value.



4. **Geocoding (source – ESRI):** A GIS operation for converting street addresses into spatial data that can be displayed as features on a map, usually by referencing address information from a street segment data layer.

5. **Euclidean Distance (source – ESRI):** The straight-line distance between two points on a plane. Euclidean distance, or distance "as the crow flies," can be calculated using the Pythagorean Theorem. 
6. **Weighted Sum (source – ESRI):** Overlays several rasters, multiplying each by their given weight and summing them together.
7. **Combine (source – ESRI):** The Combine tool assigns a new number to each unique combination of input values to the VALUE item in the attribute table of the output raster. Additional items are added to the output rasters' attribute table—one for each input raster. The names of the input rasters are assigned to the item names. Each of these items carries the unique input combination of values from the input rasters that produce the output value. These items retain the parentage that was used to produce the values for the output raster.
8. **Reclassification (source – ESRI):** The process of taking input cell values and replacing them with new output cell values. Reclassification is often used to simplify or change the interpretation of raster data by changing a single value to a new value, or grouping ranges of values into single values—for example, assigning a value of 1 to cells that have values of 1 to 50, 2 to cells that range from 51 to 100, and so on.

Data Creation/Source by Map Reference:

- Map 1 Regional Location
 - Political boundaries obtained from <http://www.nconemap.com/>
- Map 2 Population Density
 - Persons per Acre: Layer created from interpolated US Census block points by using the inverse distance weighed method. Data based upon persons per acre calculation.
- Map 3 Population Growth 1990-2010
 - Population growth 1990 to 2010: Layer created from interpolated US Census block points by using the inverse distance weighted method. Data based upon calculating the percent change in total population from 1990 to 2010.
- Map 4 Elderly Concentration (65+)
 - Concentration of the Elderly (65+): Layer created from interpolated US Census block points by using the inverse distance weighed method. Data based upon calculating the population density of the persons over the age of 65.
- Map 5 2010 Median Household Income
 - Median Household Income: Layer created from interpolated US Census block points by using the inverse distance weighed method. Data based upon the 2010 median household income.

- Map 6 2010 Persons (25+) with No High School Diploma
 - Persons (25+) with No High School Diploma: Layer created from interpolated US Census block points by using the inverse distance weighed method. Data based upon to percent of individuals over the age of 25 not completing high school.

- Map 7 Socioeconomic Status
 - Socioeconomic Status (SES): Layer created through an equal weighted sum function composed of median household income, persons (25+) with no high school diploma, and unemployment percentage. Data based upon interpolated US Census block points.

- Map 8 2010 Mean Travel Time to Work
 - Mean Travel Time to Work (2010): Layer created from interpolated US Census block points by using the inverse distance weighed method. Data based upon the 2010 mean travel time to work.

- Map 9 2010 Means of Transportation to Work—Drove Alone
 - Means of Transportation to Work – Drove Alone (2010): Layer created from interpolated US Census block points by using the inverse distance weighed method. Data based upon the 2010 means of transportation to work category “drove alone”. Home-based workers are excluded from the analysis.

- Map 10 Proximity to Healthcare Providers
 - Proximity to Healthcare Providers: Layer created using the Euclidean distance function. Data based upon manually digitized and/or geocoded sources.

- Map 11 Proximity to Dental Facilities
 - Proximity to Dental Facilities: Layer created using the Euclidean distance function. Data based upon manually digitized and/or geocoded sources.

- Map 12 Access to Full-Service Grocery Stores
 - Full-Service Grocery Availability: Layer created using the Euclidean distance function. Data based upon manually digitized and/or geocoded sources.

- Map 13 Population Vulnerable to Chronic Disease
 - Chronic Disease Vulnerability: Layer created through an equal weighted sum function composed of concentration of the elderly and socioeconomic status. Data based upon interpolated US Census block points.

- Map 14 Access to Active Transportation
 - Proximity to Active Transportation: Layer created using the Euclidean distance function. Data based upon manually digitized and/or geocoded sources in addition to information collected from WAVE Transit.

- Map 15 Elderly Transit Access
 - Elderly Transit Access: Layer created using the Euclidean distance and combine function. The output was reclassified to reflect level of priority. Data based upon the concentration of elderly and WAVE Transit stops.

- Map 16 Access to Physical Activity
 - Access to Physical Activity Facilities: Layer created using the Euclidean distance function. Data based upon manually digitized, existing, and/or geocoded sources.

- Map 17 Health and Wellness Priority Areas – Brunswick County
 - Health and Wellness Priority Areas: Layer created using the weighted sum function based upon values established by the Health and Wellness Advisory committee.

- Map 18 Health and Wellness Priority Areas – New Hanover County
 - Health and Wellness Priority Areas: Layer created using the weighted sum function based upon values established by the Health and Wellness Advisory committee.

- Map 19 Health and Wellness Priority Areas – Pender County
 - Health and Wellness Priority Areas: Layer created using the weighted sum function based upon values established by the Health and Wellness Advisory committee.

Appendix 3: Full-Service Grocery Stores

Name	SNAP	EBT	WIC	Fruits/ Vegetables	Telephone	Street #	Dir	Street Name	Street Type	Address 2	City	Zip	County
Food Lion of Calabash	Y	Y	Y	Y	910-579-8807	9869	W	Ocean Highway	Hwy		Calabash	28467	Brunswick
Food Lion of Holden Beach	Y	Y	Y	Y	910-842-4911	1100	SW	Sabbath Home	Rd		Holden Beach	28462	Brunswick
Food Lion of Leland	Y	Y	Y	Y	910-383-1467	1735		Reed	Rd		Leland	28451	Brunswick
Food Lion of Leland	Y	Y	Y	Y	910-343-1997	103		Village	Rd		Leland	28451	Brunswick
Food Lion of Oak Island	Y	Y	Y	Y	910-278-7291	5901	E	Oak Island	Dr		Oak Island	28465	Brunswick
Food Lion of Shallotte	Y	Y	Y	Y	910-754-6444	301	S	Willis	Dr		Shallotte	28470	Brunswick
Food Lion of Southport	Y	Y	Y	Y	910-457-9099	4930	SE	Long Beach	Rd		Southport	28461	Brunswick
Food Lion of Sunset Beach	Y	Y	Y	Y	910-579-8395	1680		Seaside	Rd		Sunset Beach	28468	Brunswick
Harris Teeter - Waterford Commercial Center	Y	Y	Y	Y	910-371-3944	2021		Old Regent	Way		Leland	28451	Brunswick
Hills Super Market	Y	Y	Y	Y	910-754-3636	5001		Main	St		Shallotte	28470	Brunswick
IGA - Surf City Super Market	N	Y	N	Y	910-328-3961	106	S	Topsail	Dr		Surf City	28445	Brunswick
Island Market	N	N	N	Y	910-579-0815	430	S	Sunset Beach	Blvd		Sunset Beach	28468	Brunswick
Lowe's Foods of Leland	Y	Y	Y	Y	910-371-5544	1152	E	Cutlar	Xing		Leland	28451	Brunswick
Lowe's Foods of Ocean Isle Beach	Y	Y	Y	Y	910-579-9311	6278		Beach	Dr	Unit 5	Ocean Isle Beach	28469	Brunswick
Lowe's Foods of Shallotte	Y	Y	Y	Y	910-754-8225	5051-3		Main	St		Shallotte	28459	Brunswick
Lowe's Foods of Southport	Y	Y	Y	Y	910-457-0657	4967	SE	Long Beach	Rd		Southport	28461	Brunswick
Maritime Market	N	N	N	Y	910-457-7450	8		Maritime	Way		Bald Head Island	28461	Brunswick
Piggly Wiggly - Leland	Y	Y	Y	Y	910-371-2253	112 A		Village	St		Leland	28451	Brunswick

Name	SNAP	EBT	WIC	Fruits/ Vegetables	Telephone	Street #	Dir	Street Name	Street Type	Address 2	City	Zip	County
Walmart Supercenter - Leland	Y	Y	Y	Y	910-383-1769	1112		New Pointe	Bldv		Leland	28451	Brunswick
Walmart Supercenter - Shallotte	Y	Y	Y	Y	910-754-2880	4540		Main	St	B 3079	Shallotte	28459	Brunswick
Walmart Supercenter - Southport	Y	Y	Y	Y	910-454-9909	1675	N	Howe	St		Southport	28461	Brunswick
Country Fresh Produce	Y	Y	Y	Y	910-763-6122	2069		Carolina Beach	Rd		Wilmington	28401	New Hanover
Everybody's Super Market	Y	Y	Y	Y	910-763-4444	1022		Greenfield	St		Wilmington	28401	New Hanover
Food Lion of Carolina Beach	Y	Y	Y	Y	910-458-5410	1401	N	Lake Park	Bldv		Carolina Beach	28428	New Hanover
Food Lion of Wilmington	Y	Y	Y	Y	910-452-4192	6400-1		Carolina Beach	Rd		Wilmington	28412	New Hanover
Food Lion of Wilmington	Y	Y	Y	Y	910-791-0339	3905		Independence	Bldv	Unit A	Wilmington	28412	New Hanover
Food Lion of Wilmington	Y	Y	Y	Y	910-395-2676	3600	S	College	Rd		Wilmington	28412	New Hanover
Food Lion of Wilmington	Y	Y	Y	Y	910-794-8138	2432	S	17th	St		Wilmington	28401	New Hanover
Food Lion of Wilmington	Y	Y	Y	Y	910-762-3269	1929		Oleander	Dr		Wilmington	28403	New Hanover
Food Lion of Wilmington	Y	Y	Y	Y	910-256-3137	1319		Military Cutoff	Rd		Wilmington	28405	New Hanover
Food Lion of Wilmington	Y	Y	Y	Y	910-343-1997	45	S	Kerr	Ave		Wilmington	28403	New Hanover
Food Lion of Wilmington	Y	Y	Y	Y	910-793-1635	6932		Market	St	Suite A	Wilmington	28411	New Hanover
Food Lion of Wilmington	Y	Y	Y	Y	910-251-7885	2601-A		Castle Hayne	Rd		Wilmington	28401	New Hanover
Food Lion of Wilmington	Y	Y	Y	Y	910-686-2492	8207		Market	St		Wilmington	28405	New Hanover
Food Lion of Wilmington	Y	Y	Y	Y	910-790-9938	3211		Enterprise	Dr		Wilmington	28405	New Hanover
Harris Teeter - Beau Rivage Marketplace	Y	Y	Y	Y	910-796-3091	5920		Carolina Beach	Rd		Wilmington	28412	New Hanover

Name	SNAP	EBT	WIC	Fruits/ Vegetables	Telephone	Street #	Dir	Street Name	Street Type	Address 2	City	Zip	County
Harris Teeter - College Rd Location	Y	Y	Y	Y	910-452-9242	820	S	College	Rd		Wilmington	28403	New Hanover
Harris Teeter -Hanover Center	Y	Y	Y	Y	910-343-4216	3501		Oleander	Dr	Unit 18	Wilmington	28403	New Hanover
Harris Teeter - Long Leaf Mall	Y	Y	Y	Y	910-791-4505	2800	S	College	Rd		Wilmington	28412	New Hanover
Harris Teeter - Lumina Commons	Y	Y	Y	Y	910-256-2015	1940		Eastwood	Rd		Wilmington	28403	New Hanover
Harris Teeter - Mayfaire	Y	Y	Y	Y	910-256-1071	6805		Parker Farm	Rd		Wilmington	28405	New Hanover
Harris Teeter - Oak Landing Shopping Center	Y	Y	Y	Y	910-681-0571	8260		Market	St		Wilmington	28411	New Hanover
Harris Teeter - Ogden Plaza	Y	Y	Y	Y	910-392-2154	6840	N	Market	St		Wilmington	28405	New Hanover
La Huerta Fresh Market	N	N	N	Y	910-799-6167	830	S	Kerr	Ave		Wilmington	28403	New Hanover
Lowe's Foods of Wilmington	Y	Y	Y	Y	910-796-8330	805		Pine Grove	Dr		Wilmington	28403	New Hanover
Lowe's Foods of Wilmington	Y	Y	Y	Y	910-796-9616	341	S	College	Rd	Unit 37	Wilmington	28403	New Hanover
Lowe's Foods of Wilmington	Y	Y	Y	Y	910-392-7230	2316	N	College	Rd		Wilmington	28405	New Hanover
Lowe's Foods of Wilmington (Monkey Junction)	Y	Y	Y	Y	910-790-5335	5309		Carolina Beach	Rd		Wilmington	28412	New Hanover
Roberts Market	N	N	N	Limited	910-256-2641	32	N	Lumina	Ave		Wrightsville Beach	28480	New Hanover
Saigon Market Oriental Grocery	Y	Y	Y	Y	910-793-9911	4507		Franklin	Ave		Wilmington	28403	New Hanover

Name	SNAP	EBT	WIC	Fruits/ Vegetables	Telephone	Street #	Dir	Street Name	Street Type	Address 2	City	Zip	County
Sea Merchants Food Store	Y	Y	Y	Y	910-458-7409	257		Cape Fear	Blvd		Carolina Beach	28428	New Hanover
Target	Y	Y	Y	Y	910-395-5057	4711		New Centre	Dr		Wilmington	28405	New Hanover
The Fresh Market	Y	Y	Y	Y	910-256-3524	1060		International	Dr		Wilmington	28405	New Hanover
The Veggie Wagon	Y	Y	Y	Y	910-805-3014	608 B	S	Lake Park	Blvd		Carolina Beach	28428	New Hanover
Tidal Creek Co-Op	Y	Y	Y	Y	910-799-2667	5329		Oleander	Dr		Wilmington	28403	New Hanover
Trader Joe's	Y	Y	N	Y	910-395-5173	1437	S	College	Rd		Wilmington	28403	New Hanover
Walmart Supercenter - Monkey Junction	Y	Y	Y	Y	910-452-0944	5135		Carolina Beach	Rd		Wilmington	28412	New Hanover
Walmart Supercenter - Wilmington	Y	Y	Y	Y	910-392-4034	5226		Sigmon	Rd		Wilmington	28403	New Hanover
Whole Foods	Y	Y	Y	Y	910-777-2499	3804		Oleander	Dr		Wilmington	28403	New Hanover
Food Lion of Burgaw	Y	Y	Y	Y	910-259-5058	602	N	US Hwy 117	Hwy		Burgaw	28425	Pender
Food Lion of Hampstead	Y	Y	Y	Y	910-270-9703	14564		US Hwy 17	Hwy		Hampstead	28443	Pender
Food Lion of Rocky Point	Y	Y	Y	Y	910-675-2156	8057	S	US Hwy 117	Hwy	Unit 11	Rocky Point	28457	Pender
Food Lion of Surf City	Y	Y	Y	Y	910-329-1163	13601		NC Hwy 50	Hwy		Surf City	28445	Pender
Harris Teeter - Surf City Crossing	Y	Y	Y	Y	910-329-0711	203		Alston	Blvd		Hampstead	28443	Pender
Lowes Foods of Hampstead	Y	Y	Y	Y	910-270-6300	17230		US Hwy 17	Hwy		Hampstead	28443	Pender
Piggly Wiggly - Burgaw	Y	Y	Y	Y	910-259-3373	103	S	Dudley	St		Burgaw	28425	Pender

Appendix 4: Recreational Opportunities

Parks & Recreational Facilities	County	Address
Alvin C Caviness Park	Brunswick	Owens Street, Southport
Bird Island	Brunswick	40th Street and West Main Street, Sunset Beach
Brunswick Nature Park	Brunswick	2601 River Road (NC 133), Winnabow
Brunswick River Park	Brunswick	580 River Road, Leland
Calabash Community Park	Brunswick	868 Persimmon Road, Calabash
Cedar Grove Park	Brunswick	750 Grove Trail Southwest, Supply
Dutchman Creek Park	Brunswick	4750 Fish Factory Rd SE, Southport
Ferry Landing Park	Brunswick	Shalotte Blvd & 7th Street, Ocean Isle Beach
Franklin Square Park	Brunswick	105 E Moore Street, Southport
Keziah Park	Brunswick	Moore and Lord Street, Southport
Kingsley Street Park	Brunswick	Kingsley Street, Southport
Leland Community Park	Brunswick	1490 Village Road NE, Leland
Leland Municipal Park	Brunswick	102 Town Hall Drive, Leland
Lockwood Folly District Park	Brunswick	430 Green Swamp Road, Supply
Lowe-White Memorial Park	Brunswick	Leonard Street and Willis Drive, Southport
Malcolm Register Park	Brunswick	NE 52nd Street, Oak Island
Middleton Park	Brunswick	4700 E Oak Island Drive, Oak Island
Navassa Park	Brunswick	800 Park Avenue, Navassa
Northwest District Park	Brunswick	1937 Andrew Jackson Hwy NE, Leland
Oak Island Nature Center & Register Park	Brunswick	5202 E Yacht Drive, Oak Island
Oak Island Skate Park	Brunswick	SE 49th Street, Oak Island
Ocean Isle Beach Park	Brunswick	6483 Old Georgetown Road, Ocean Isle Beach
Riverside Park	Brunswick	Hwy 130 and Main Street, Shallotte

Parks & Recreational Facilities	County	Address
Shallotte District Park & Dog Park	Brunswick	5550 Main Street, Shallotte
Smithville District Park	Brunswick	8340 River Rd SE, Southport
Sturgeon Creek Park (under construction)	Brunswick	844 Appleton Way, Leland
Sunset Beach Waterfront Park	Brunswick	Sunset Blvd, Sunset Beach
Tidalwaves Canoe Dock	Brunswick	SE 31st Street, Oak Island
Town Creek District Park	Brunswick	6420 Ocean Hwy East, Winnabow
Waccamaw Park	Brunswick	5855 Waccamaw School Rd NW, Ash
Waterfront Park	Brunswick	Bay Street, Southport
Westgate Nature Park	Brunswick	1260 Westgate Drive, Leland
William "Bill" Smith Park & Salty Dog Park	Brunswick	4410 Fish Factory Road, Oak Island
1898 Park	New Hanover	1018 N 3rd Street, Wilmington
4th Street Park	New Hanover	4th Street & Nixon Street, Wilmington
Airlie Gardens	New Hanover	300 Airlie Road, Wilmington
Alderman Park	New Hanover	3800 Canterbury Road, Wilmington
Anne McCrary Park	New Hanover	4000 Randall Parkway, Wilmington
Archie Blue Community Park	New Hanover	1306 Stanley Street, Wilmington
Arrowhead Park	New Hanover	720 Arnold Road, Wilmington
Bailey Park	New Hanover	20 N Front Street, Wilmington
Beaumont Park	New Hanover	101 Wayne Drive, Wilmington
Bicentennial Park	New Hanover	206 N 5th Street, Wilmington
Bijou Park	New Hanover	209 N Front Street, Wilmington
Blair-Noble Park	New Hanover	6510 Market Street, Wilmington
Blue Clay Bike Park	New Hanover	3840 Juvenile Center Road, Castle Hayne
Bullock Park	New Hanover	2013 Market Street, Wilmington

Parks & Recreational Facilities	County	Address
Cameron Park	New Hanover	245 Southern Blvd, Wilmington
Cape Fear Optimist Park	New Hanover	3222 North Kerr Avenue, Wilmington
Flemington Soccer Complex	New Hanover	205 Sutton Steam Plant Road, Wilmington
Carolina Beach Lake Park	New Hanover	Atlantic Avenue & S Lake Park Blvd, Carolina Beach
Carolina Beach State Park	New Hanover	1010 B Road, Carolina Beach
Carolina Courtyard Park	New Hanover	201 North 3rd Street, Wilmington
Castle Hayne Park	New Hanover	4700 Old Avenue, Wilmington
Causeway Drive Park	New Hanover	Causeway Drive, Wrightsville Beach
Church & Nun Park	New Hanover	1922 Nun Street, Wilmington
Claude Howell Park	New Hanover	200 S Water Street, Wilmington
Dram Tree Park	New Hanover	602 Surry Street, Wilmington
Empie Park & Dog Park	New Hanover	3405 Park Avenue, Wilmington
Fort Fisher State Recreation Area	New Hanover	1000 Loggerhead Road, Carolina Beach
Godwin Park	New Hanover	215 Shipyard Blvd, Wilmington
Greenfield Park & Skate Park	New Hanover	1739 Burnett Blvd, Wilmington
Greensboro Street Park	New Hanover	West Greensboro Street, Wrightsville Beach
Halyburton Memorial Park	New Hanover	4099 S 17th Street, Wilmington
Hanover Heights Park	New Hanover	801 Adelaide Drive, Wilmington
Hemenway Park	New Hanover	507 McRae Street, Wilmington
Hugh McRae Athletic Complex	New Hanover	4305 Shipyard Boulevard, Wilmington
Hugh McRae Park	New Hanover	314 Pine Grove Drive, Wilmington
Independence Park (Planning Stages)	New Hanover	3800 Canterbury Road, Wilmington
Innis Park	New Hanover	102 N 3rd Street, Wilmington
Island Drive Mini Park	New Hanover	Island Drive, Wrightsville Beach

Parks & Recreational Facilities	County	Address
James EL Wade Park	New Hanover	3500 Bethel Road, Wilmington
Joe Eakes Park	New Hanover	Avenue K, Kure Beach
John & Ruth Burnett Natural Area (Future Park)	New Hanover	6500 River Road, Wilmington
Kennedy Park	New Hanover	2108 Plaza Drive, Wilmington
Kings Grant Park	New Hanover	5027 Lord Byron Road, Wilmington
Kure Beach Ocean Front Park	New Hanover	Avenue K & Atlantic Avenue, Kure Beach
Lee's Nature Park	New Hanover	Causeway Drive, Wrightsville Beach
Legion Sports Complex	New Hanover	2139 Carolina Beach Road, Wilmington
Love Grove	New Hanover	1601 Wynnwood Drive, Wilmington
Maides Park	New Hanover	1101 Manly Road, Wilmington
MarStella Park	New Hanover	202 Marstellar Street, Wilmington
Mary Bridgers Park	New Hanover	1925 Chestnut Street, Wilmington
Middle Sound Park (Future Park)	New Hanover	7217 Dunbar Road, Wilmington
Mike Chappell Park	New Hanover	501 Dow Rd S, Carolina Beach
Monterey Heights Park	New Hanover	401 Cathay Road, Wilmington
Mothers Community Park	New Hanover	3210 Camden Circle, Wilmington
Northside Park	New Hanover	610 Bess Street, Wilmington
Nunalee Park	New Hanover	416 S 17th Street, Wilmington
Ogden Park - Gordon Road Fields & Picnic Area	New Hanover	615 Ogden Park Drive, Wilmington
Ogden Park - Market Street Fields	New Hanover	225 Ogden Park Drive, Wilmington
Olsen Park	New Hanover	6017 Murrayville Road, Wilmington
Optimist Park	New Hanover	1650 Front Street, Wilmington
Parkwood Recreational Area	New Hanover	4827 Canetuck Road, Wilmington
Piney Ridge Nature Preserve (Alderman Park)	New Hanover	3800 Canterbury Road, Wilmington

Parks & Recreational Facilities	County	Address
Rankin Park (Portia Mills Hines Park)	New Hanover	40 N 10th Street, Wilmington
River Road Park	New Hanover	6500 River Road, Wilmington
River Side Park	New Hanover	6710 Old Bridgesite Road, Wilmington
Riverfront Park	New Hanover	5 N Water Street, Wilmington
Robert Strange Park	New Hanover	401 S 8th Street, Wilmington
Seagate Park (Future Park)	New Hanover	118 Hinton Avenue, Wilmington
Smith Creek Park	New Hanover	633 Shenandoah Street, Wilmington
Snows Cut Park	New Hanover	9420 River Road, Wilmington
South Channel Mini Park	New Hanover	South Channel Drive, Wrightsville Beach
Southgate Park	New Hanover	201 Pershing Court, Wilmington
Sunset & Adams Park	New Hanover	Sunset Ave & Adams Street, Wilmington
Thomas B Lilly Park	New Hanover	502 Forest Hills Drive, Wilmington
Tower Park	New Hanover	910 Wooster Street, Wilmington
Trails End Park	New Hanover	613 Trails End Road, Wilmington
Tree Garden @ Greenfield Lake	New Hanover	1702 Burnett Blvd, Wilmington
Veterans Park	New Hanover	835 Halyburton Memorial Parkway, Wilmington
Wallace Park	New Hanover	2110 Market Street, Wilmington
Wrightsboro Park	New Hanover	3091 Castle Hayne Road, Wilmington
Wrightsville Beach Arboretum	New Hanover	US 74, Wrightsville Beach
Wrightsville Beach Park	New Hanover	98 Bob Sawyer Drive, Wrightsville Beach
Wynn Plaza Waterfront Park	New Hanover	Wrightsville Beach
Hampstead Kiwanis Park	Pender	586 Sloop Point Loop Road, Hampstead
Hampstead Intracoastal Waterway Access	Pender	Hampstead
Hankins Park	Pender	310 North Walker Street, Burgaw

Parks & Recreational Facilities	<u>County</u>	<u>Address</u>
Harrell Memorial Park	Pender	108 East Ashe Street, Burgaw
Hoggard Park	Pender	N Rankin Street & E Church Street, Atkinson
Johnson Park	Pender	South Walker Street & East Hayes Street, Burgaw
Kenneth Batts Family Park	Pender	South Topsail Drive, Surf City
Millers Pond Park	Pender	12762 US Hwy 117, Rocky Point
Moores Creek National Battlefield	Pender	40 Patriots Hall Drive, Currie
Nelva R Albury Recreation Area	Pender	Highway 210 and Broadway Street, Surf City
Pender Memorial Park	Pender	601 South Smith Street, Burgaw
Rotary Park	Pender	Industrial Drive, Burgaw
Soundside Park	Pender	Roland Avenue, Surf City

Pools	<u>County</u>	<u>Address</u>
Legion Pool	New Hanover	2131 Carolina Beach Road, Wilmington
Robert Strange Pool	New Hanover	410 S 10 th Street, Wilmington
Northside Pool & Splash Pad	New Hanover	750 Bess Street, Wilmington

School Physical Activity Locations	County	Address
Anderson Elementary School	New Hanover	455 Halyburton Memorial Parkway, Wilmington
Ashley High School	New Hanover	555 Halyburton Memorial Parkway, Wilmington
Bradley Creek Elementary School Soccer Fields	New Hanover	6211 Greenville Loop Road, Wilmington
Eaton Elementary Soccer Fields	New Hanover	6701 Gordon Road, Wilmington
Hoggard High School Fields	New Hanover	4305 Shipyard Boulevard, Wilmington
Laney High School Tennis Courts	New Hanover	2700 North College Road, Wilmington
Murray Middle School	New Hanover	655 Halyburton Memorial Parkway, Wilmington
Myrtle Grove Middle School Park/Athletic Fields	New Hanover	901 Piner Road, Wilmington
Roland-Grise Middle School Soccer Field	New Hanover	4412 Lake Avenue, Wilmington
Trask Middle School Park/Athletic Fields	New Hanover	2900 South College Road, Wilmington

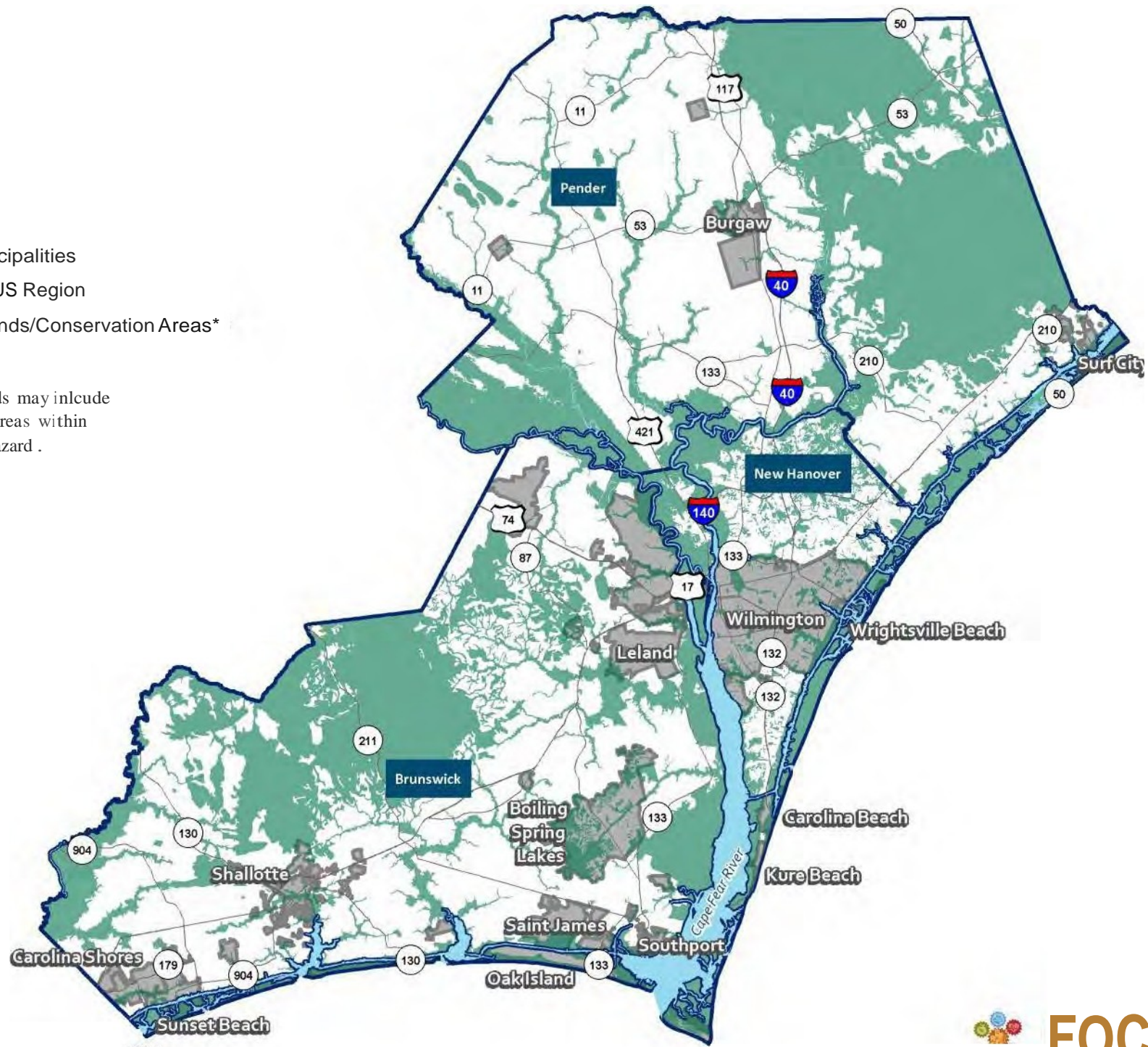
Community Centers	County	Address
Boxing & Physical Fitness Center	New Hanover	302 S 10th Street, Wilmington
MLK Community Center	New Hanover	401 S 8th Street, Wilmington
Maides Park Community Center	New Hanover	1101 Manly Road, Wilmington
Fit for Fun Center	New Hanover	302 S 10th Street, Wilmington
Hemenway Community Center	New Hanover	507 McRae Street, Wilmington
Canetuck Community Center	Pender	6098 Canetuck Road, Currie
Caswell Community Center	Pender	Slocum Trail Road, Atkinson
Edgecombe Community Center	Pender	Highway 17, Hampstead
Joint Community Outreach Center	Pender	17808 Highway 210, Rocky Point
Maple Hill Resource Center	Pender	Maple Hill School Road, Maple Hill
Surf City Community Center	Pender	201 Community Center Drive, Surf City
Willard Outreach Organization	Pender	9955 NC Hwy 11, Willard

Senior Centers	County	Address
Leland Senior Center	Brunswick	1490 Village Road, Leland
Shallotte Senior Center	Brunswick	5040 Main Street, Shallotte
Southport Senior Center	Brunswick	1513 N Howe Street, Suite 1, Southport
Katie B Hines Senior Center	New Hanover	308 Cape Fear Blvd, Carolina Beach
NHC Senior Resource Center	New Hanover	2222 S College Road, Wilmington
Heritage Place	Pender	901 S Walker Street, Burgaw
Topsail Senior Center	Pender	20959 US Hwy 17, Hampstead

Legend

- Municipalities
- FOCUS Region
- Wetlands/Conservation Areas*

*These lands may include populated areas within the flood hazard.



20 5 =====

Miles
10



FOC

Coastal Planning and Development Commission
Your Future.

